









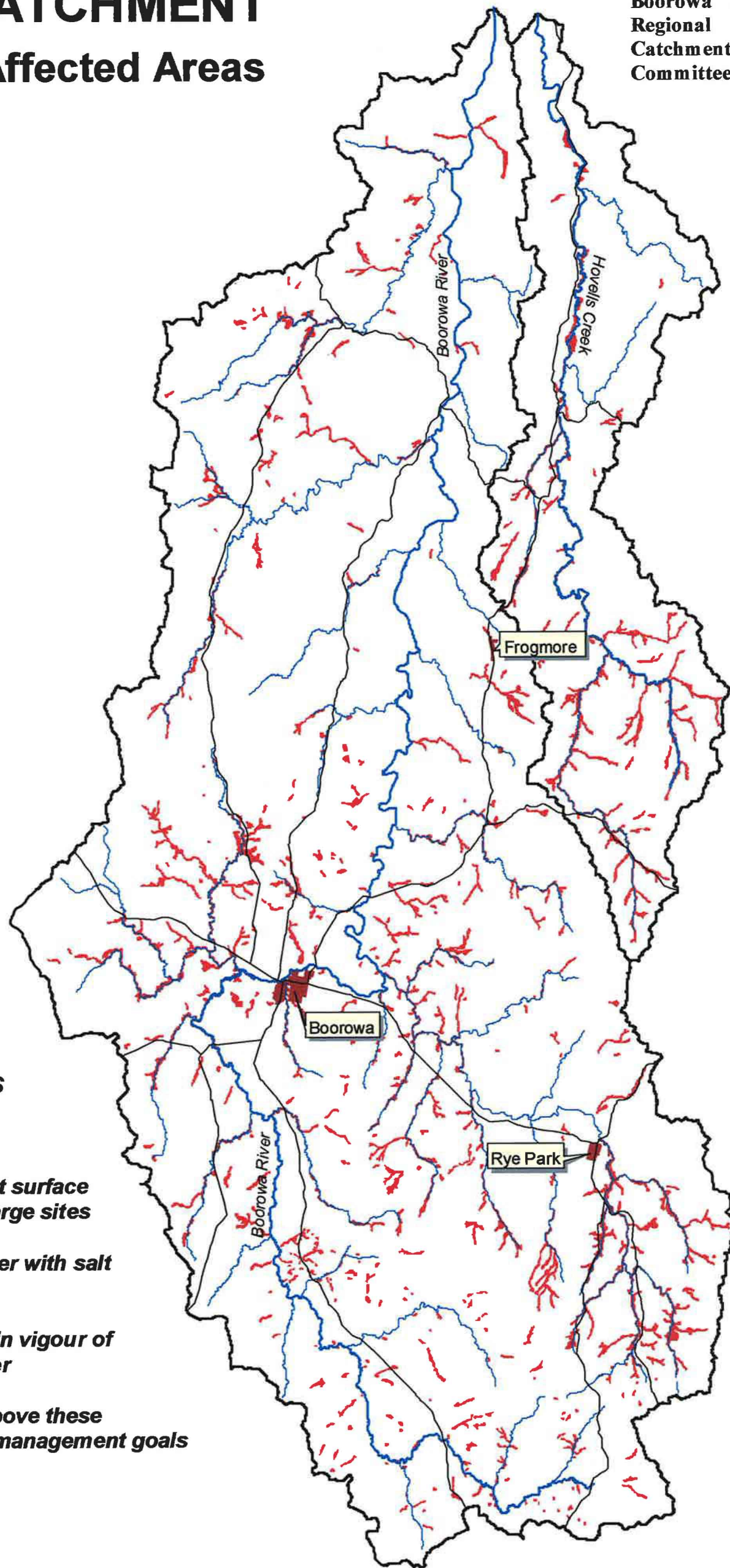
BOOROWA CATCHMENT

Map 7: Salinity Affected Areas



LEGEND

-  Catchment Boundary
-  Main Rivers
-  Main Creeks
-  Creeks and Flowlines
-  Towns
-  Highway
-  Major Roads
-  Salt Affected Areas



BEST MANAGEMENT PRACTICES

Fence the discharge area

Where erosion is a problem, divert surface water flows away from the discharge sites

Maintain and reinstate groundcover with salt tolerant species

Manage grazing regime to maintain vigour of vegetation and > 80% groundcover

Plant interceptor tree plantings above these sites where consistent with farm management goals

SOURCE
NSW Department of Infrastructure, Planning and Natural Resources
Yass Area Network of Landcare Groups

DISCLAIMER
The Boorowa River Catchment Committee, associated Landcare Groups and/or contributors accepts no responsibility for action taken or decisions made on the basis of information contained herein, or for errors, omissions or inaccuracies presented here. Whilst all care is taken to ensure a high degree of accuracy, users are advised to verify any map discrepancies.



SCALE 1:250 000