

# BOOROWA CATCHMENT

## Map 6: Extant Native Vegetation

Boorowa  
Regional  
Catchment  
Committee

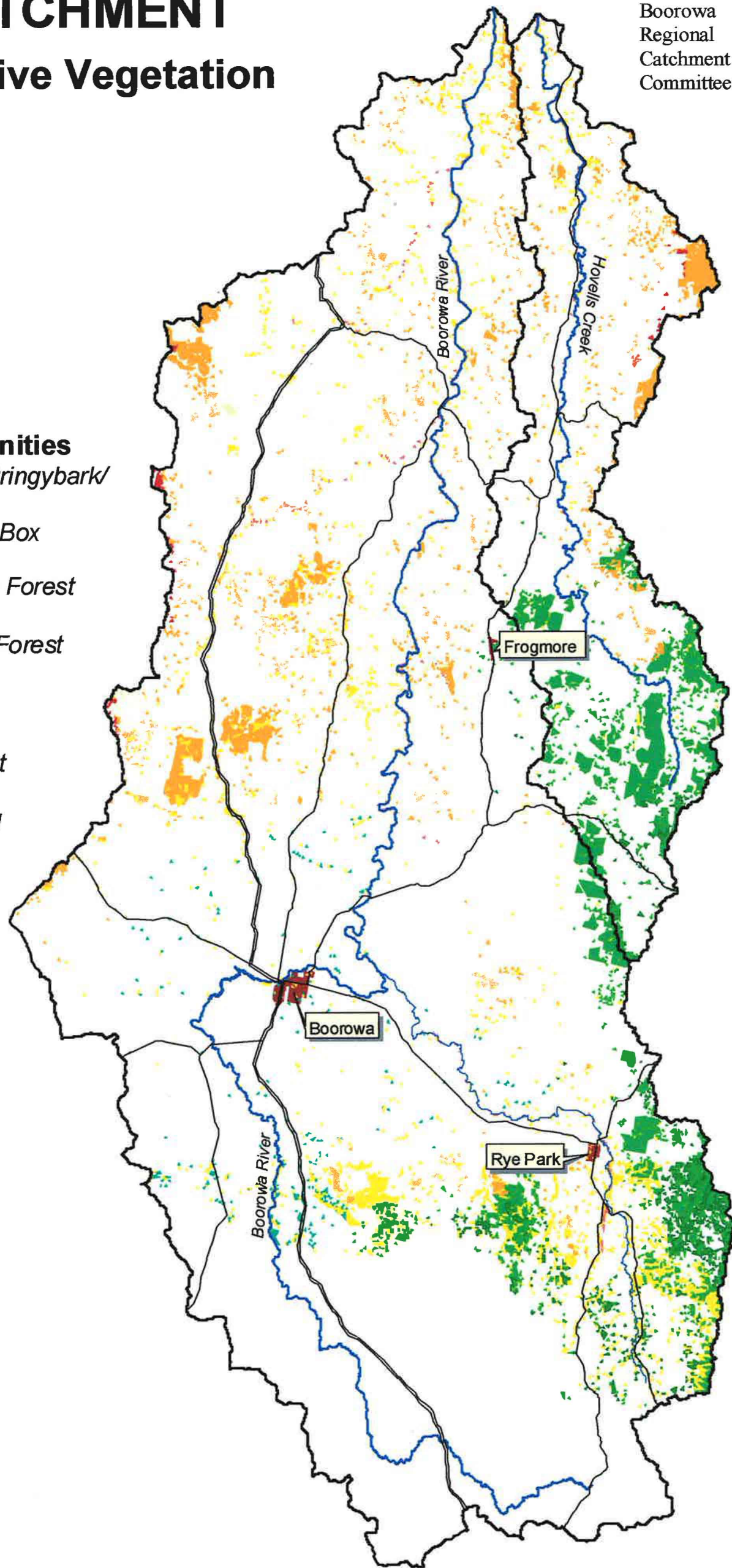


### LEGEND

- Catchment Boundary
- Main Rivers
- Main Creeks
- Towns
- Highway
- Major Roads

### Native Vegetation Communities

- Black Cypress Pine/Red Stringybark/  
Red Box Shrub Forest
- Blakely's Red Gum/Yellow Box  
Grassy Woodland
- Red Stringybark Dry Shrub Forest
- Red Stringybark/Joycea  
Tussock Grass Dry Shrub Forest
- River Oak Riparian Forest
- River Red Gum Riparian  
Grassy Forest
- Tableland Woodland/Forest
- Themeda/Bothriochloa  
Grassland/Open Woodland
- White Box Woodland



SOURCE  
NSW National Parks and Wildlife Service  
June 2002



**DISCLAIMER**  
The Boorowa River Catchment Committee, associated Landcare Groups and/or contributors accepts no responsibility for action taken or decisions made on the basis of information contained herein, or for errors, omissions or inaccuracies presented here. Whilst all care is taken to ensure a high degree of accuracy, users are advised to notify of any map discrepancies.

5 0 5 10 15 20 25 Kilometres

SCALE 1:250 000