










BOOROWA CATCHMENT

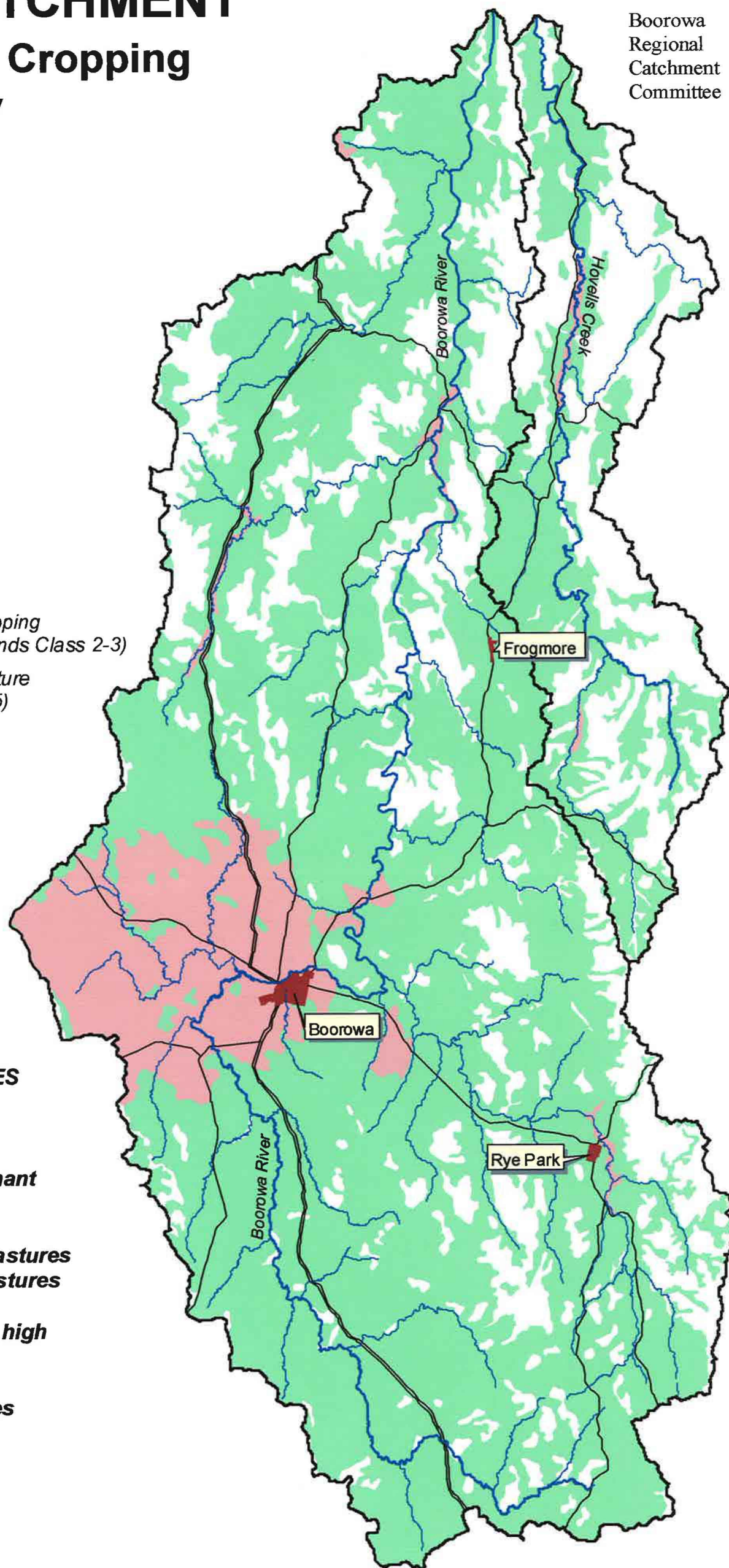
Map 4: Grazing & Cropping Country

Boorowa
Regional
Catchment
Committee



LEGEND

-  Catchment Boundary
-  Main Rivers
-  Main Creeks
-  Creeks and Flowlines
-  Towns
-  Highway
-  Major Roads
-  Land generally suitable to cropping and pasture improvement (Lands Class 2-3)
-  Land generally suitable to pasture improvement (Lands Class 4-5)



BEST MANAGEMENT PRACTICES

Retain native trees and shrubs

Maintain and manage good remnant native pasture

**Improve productivity of native pastures
Utilise deep-rooted perennial pastures**

Manage introduced pastures for high water use and production

Fence to separate native pastures from introduced pastures

SOURCE
NSW Department of Infrastructure, Planning and Natural Resources
Yass Area Network of Landcare Groups

DISCLAIMER
The Boorowa River Catchment Committee, associated Landcare Groups and/or contributors accepts no responsibility for action taken or decisions made on the basis of information contained herein, or for errors, omissions or inaccuracies presented here. Whilst all care is taken to ensure a high degree of accuracy, users are advised to notify of any map discrepancies.

5 0 5 10 15 20 25 Kilometres

SCALE 1:250 000